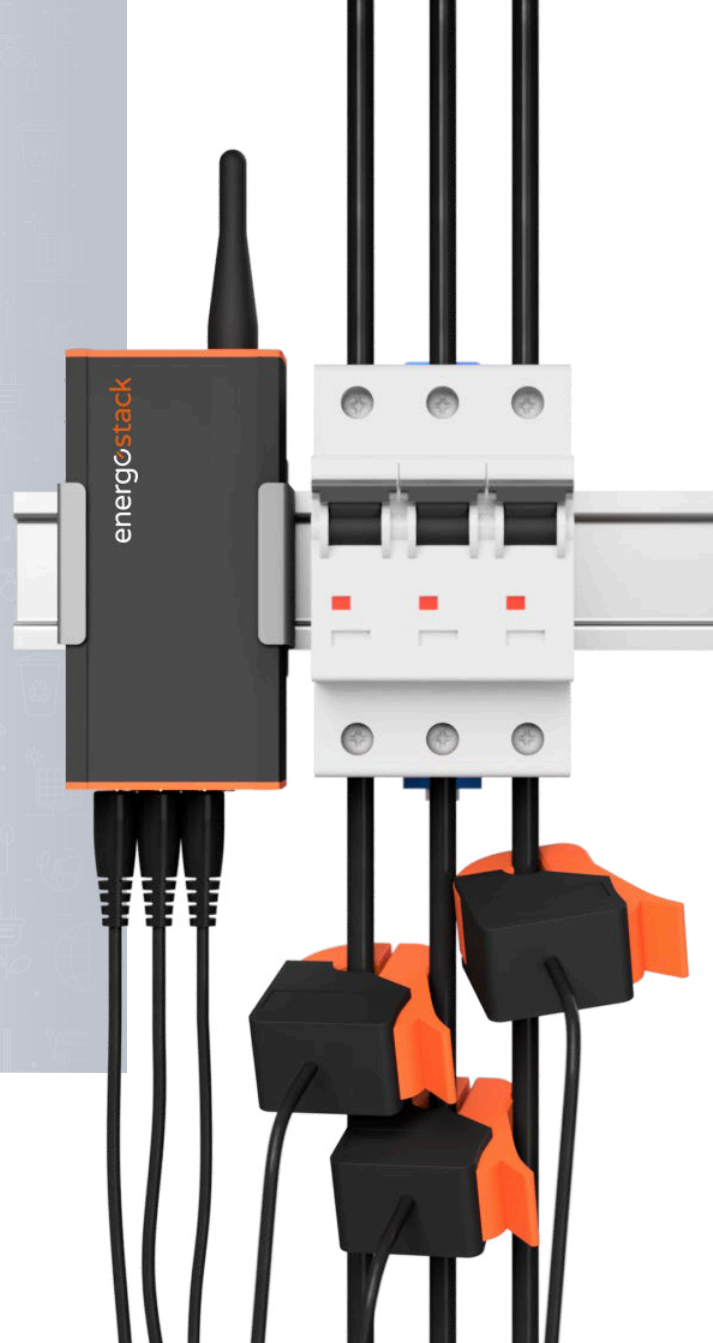


# Powersense

EOS6-PS

The EOS6-PS Powersense sensor measures the electric power and production of the supply point by connecting to 1 or 3 phases. The sensor is battery-powered and transmits the measured data wirelessly via the gateway to the cloud.



## Technical data

<b>Measured data</b>	electric power [W]
<b>Physical dimensions</b>	45 × 92 × 29 mm without antenna
<b>Weight</b>	150 g
<b>Material</b>	ABS plastic, aluminium
<b>Protection</b>	IP20
<b>Working conditions</b>	-20 °C to + 60 °C, <80% RH (non-condensing)
<b>Interface</b>	3× probe DC connector, 1× antenna SMA female connector
<b>Required accessories</b>	gateway EWG6, current transformers AC
<b>Optional accessories</b>	holder, external antenna
<b>Power supply</b>	2× exchangeable AA alkaline battery 1,5 V
<b>Battery life</b>	> 2 years (max. 5 years)
<b>Connectivity</b>	433MHz Radio (Chirp protocol)
<b>Radio range</b>	< 100 m (depending on the local conditions)
<b>Transmitting power</b>	< 10 mW
<b>Transmission time</b>	< 5 ms
<b>Transmission period</b>	5 s
<b>Resolution of metering</b>	1 W
<b>Accuracy of metering</b>	10 %
<b>Range of metering</b>	3× < 80A or 3× < 300 A
<b>Conversion constant</b>	190, 195, 200, 205, 210, 215, 220, 225, 230, 235, 240, 245, 250 [V]